



EdgeSafe Edge Protection System



Important Notes

All excavation work must be thoroughly planned before work commences on site to identify hazards and assess risk.

These instructions form guidance for EdgeSafe equipment. Non-standard applications should be approved by a suitably qualified engineer.

Ensure all personnel engaged in installation operations are properly briefed and adequately supervised by a competent person.

THIS USER GUIDE IS NOT CONTROLLED WHEN PRINTED

To ensure you are reading the most up-to-date version of this user guide, [download as a pdf](#) from the Groundforce Technical Library.



An EdgeSafe video with related SiteSafe solutions is available to [watch now](#) on our YouTube channel.

**IF IN ANY DOUBT SEEK FURTHER ADVICE:
ON FREEPHONE - 0800 000 345**



Certification Number 14419
ISO 9001 • ISO14001 • ISO45001

Rev	Date	Comments	Initial
2.4	10/02/23	Multi Clamp added Clamp ranges amended	DSW






Groundforce, Central House,
Beckwith Knowle, Otley Road,
Harrogate, HG3 1UD




T: 0800 000 345
E: info@vpgroundforce.com

SAFETY

Common Symbols and Meanings

Safety Note: We recommend using hand and eye protection when operating hydraulic equipment

PERSONAL PROTECTIVE EQUIPMENT (PPE)	
	Use eye protection
	Use hearing protection
	Wear protective gloves
	Wear head protection
	Wear protective footwear

WARNING SYMBOLS	
	General warning
	Crushing of hands
	Hot surface or oil

Introduction

EdgeSafe is a lightweight mesh barrier system designed to provide light duty edge protection to trench boxes, sheeted or timbered excavations. It can be used on short or long continuous runs and has been designed in accordance with BS EN 13374: 2004 Class A. The system provides a protective barrier to help prevent falls from height into excavations. **Note:** It should not be used to restrain or support loads.

The system can be used on most trench sheet and steel pile profiles up to 25mm thick, on box panels up to 170mm plate thickness and on walls up to 565mm thick:

Equipment Specification

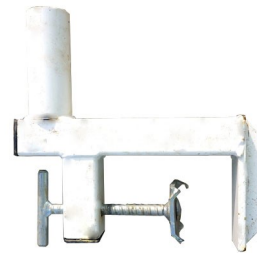
Code	Description	Size (mm)	Weight (kg)
ES.M18	Steel Mesh Panel	1800 x 1200	10
ES.M27	Steel Mesh Panel	2700 x 1200	15
ES.SP	Posts	1200	4
ES.SC	Sheet Clamp	n/a	2.5
ES.BC	Box Clamp	n/a	3
ES.DBC	Drag Box Clamp	n/a	3.5
ES.MC	EdgeSafe Multi Clamp	n/a	4.0
ES.WC	Wall Clamp	n/a	7
ES.WCXL	Wall Clamp XL	n/a	7.5
ES.S	EdgeSafe Stillage 2850 x 1115 x 1200mm	2850 x 1115 x 1200	210
ES.S2	EdgeSafe Stillage (type 2)	n/a	250



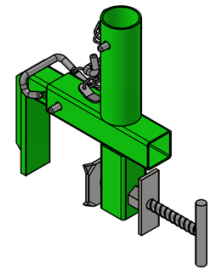
Sheet Clamp:
Range 0 - 30mm



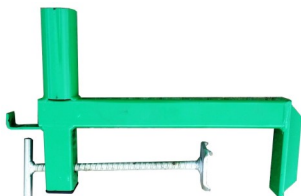
Box Clamp:
Range 30mm - 110mm



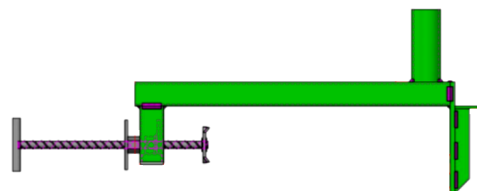
Drag box clamp:
Range 0mm - 170mm



Multi Clamp:
Range 0mm - 220mm

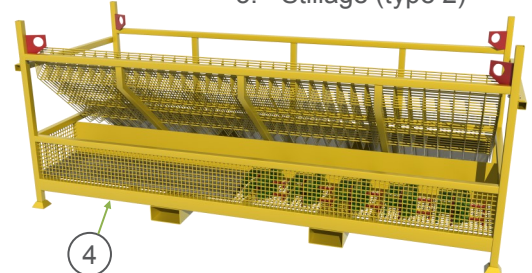
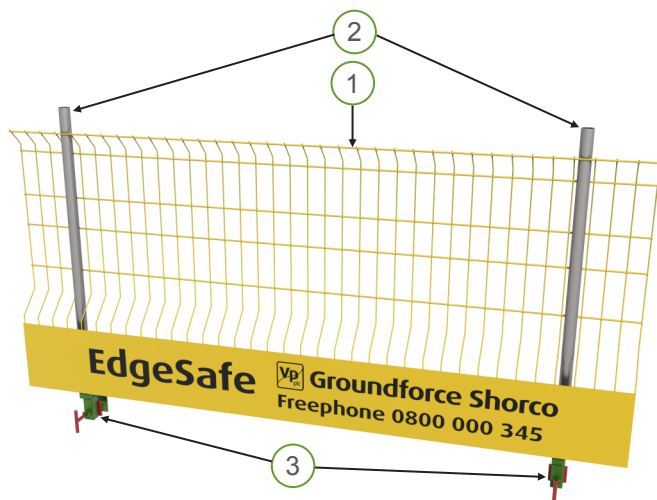


Wall clamp:
Range 150mm - 350mm



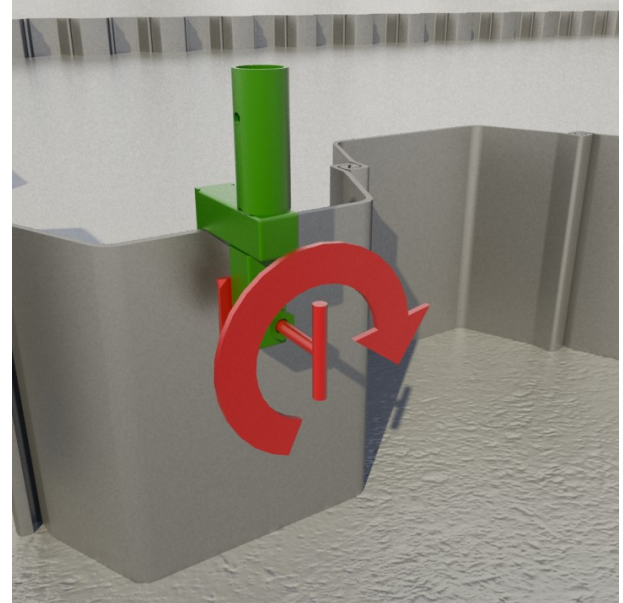
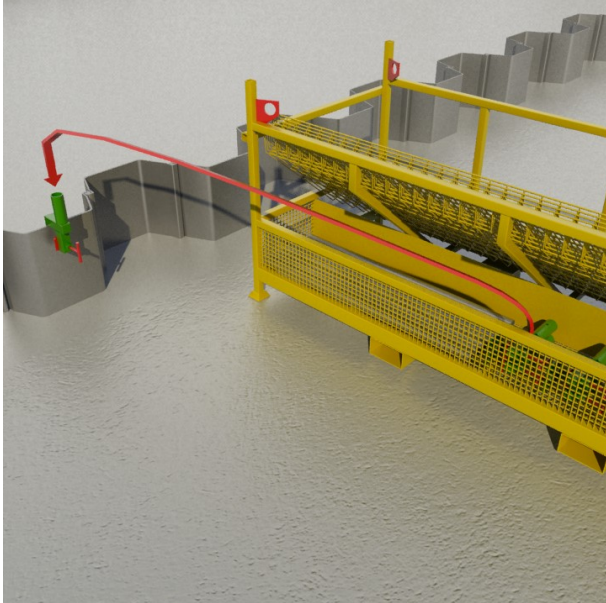
Wall clamp XL:
Range 300mm - 565mm

1. Steel Mesh Panel
2. EdgeSafe Posts
3. Clamps
4. Stillage
5. Stillage (type 2)



Installation

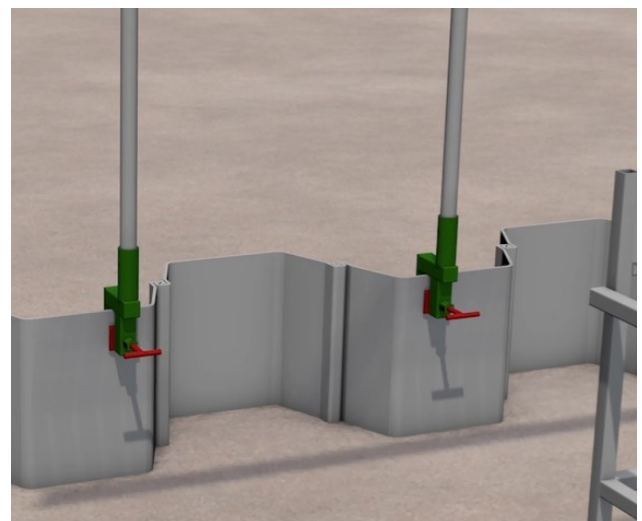
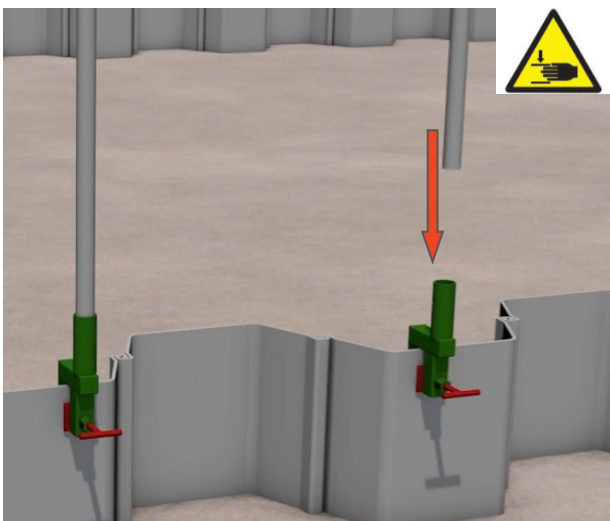
After the trench sheets/box has been installed in the ground, the post clamps must firstly be fitted securely. A minimum of two clamps are required for every mesh panel. Recommended post centres are 2m for the 2.7m panel and 1.3m for the 1.8m panel.



In trench sheets/sheet pile applications, install the clamps on to the top of two trench sheets of similar height. Where practical, the clamps should be fitted on the 'in-pan', or the earth-retained side of the Sheeted wall/panel to ensure the kick board provides maximum protection from falling debris.

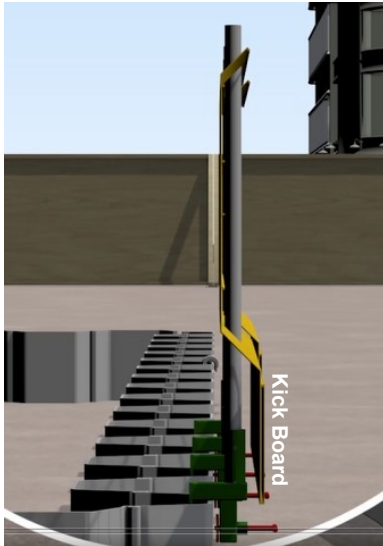
The clamp must engage to full throat depth before hand tightening by means of the T bar screw. The clamp plate incorporates hardened steel points which should 'bite' into the mating steel component. If necessary, further minimal force can be applied to the T bar with a small lump hammer to ensure the clamps are firmly fixed to the sheets.

Note: Do not apply excessive clamping force as this may distort the clamp. If the clamp is found to be damaged in any way, it must not be used and Groundforce should be contacted.



The vertical posts can now be fitted into the sockets provided in the clamps. Ensure the sockets are clear of debris so that the posts fully engage within the sockets. The clamps/posts should also be set to be as near to vertical as possible.

Installation Procedure (cont...)



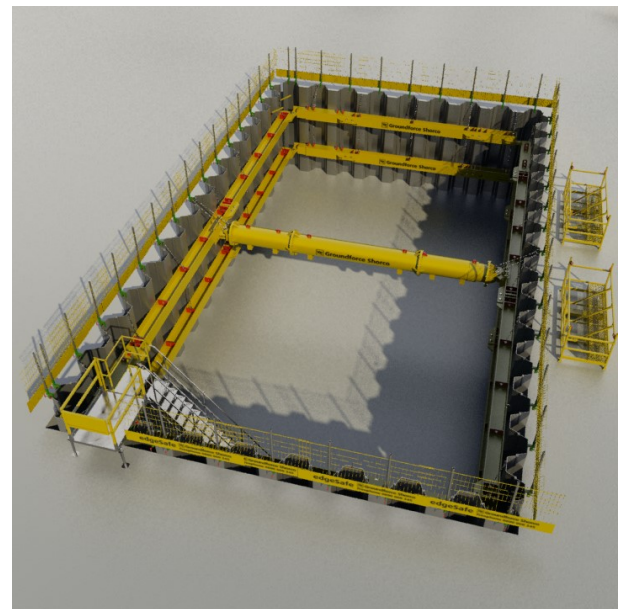
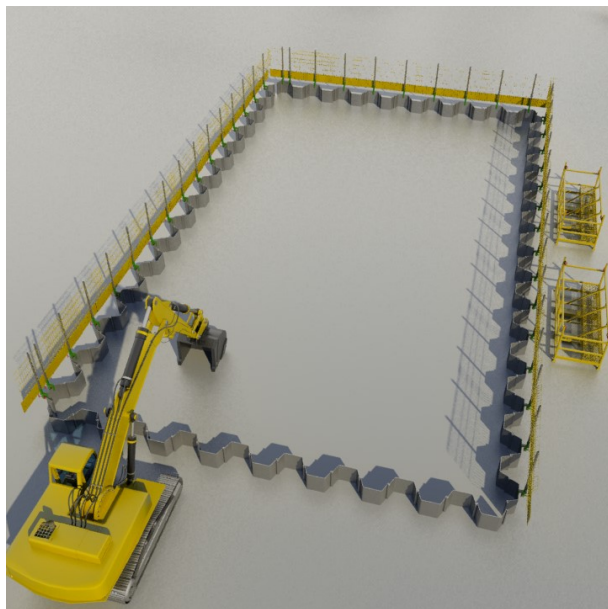
Note: the kick Board should be located in front of the trench sheets/box panel after installation.

Working in pairs, with one person stood at the end of each panel, raise the panel above the height of the posts and carefully lower over the posts; threading through suitable holes in the mesh profile. Ensure that the posts remain as vertical as possible.

Safety Note: Extreme care must be taken at all stages whilst working adjacent to an open excavation - always take appropriate safety precautions.

Security of the system should be checked:

- At the start and end of every shift
- Whenever EdgeSafe is relocated
- In the event of an accidental strike



When all the EdgeSafe has been secured, excavation of the site can proceed and temporary works installed. Ensure edge protection is in place to secure any exposed sections of the excavation.

For further details of Groundforce access and egress systems, refer to the LadderSafe user guide.



Do	Do Not
<ul style="list-style-type: none"> ✓ Take adequate precautions during installation particularly against trips and falls. Consider temporary fall arrest restraint if conditions dictate ✓ Check the system regularly for security ✓ Ensure clamps are always tight ✓ Ensure the Rapid Pin is fitted so that the cranked section drops down over the clamp socket ✓ Ensure the mesh engages under the retaining bracket and sits correctly on the clamping bar ✓ Ensure the posts are fully inserted into the clamp ✓ Ensure the posts are near vertical ✓ Ensure the Kick Board on the mesh panels protrudes below the tops of the sheets of box panels ✓ Ensure non standard installation methods are approved by a competent person ✓ Take care to avoid trapping fingers at all stages of work 	<ul style="list-style-type: none"> ✗ Lean on or subject the system to unnecessary load ✗ Move a sheet/trench box with the barrier attached ✗ Over tighten the clamps ✗ Remove or adjust the mesh retaining bracket ✗ Use damaged components



Appreciation of Excavation Safety

The theoretical safety course is mapped to both EUSR and the National Occupational Standards and introduces the learner to the basics of working around excavations. Designed as an awareness course, particular emphasis is provided to key aspects of managing and/or overseeing excavation work. [Visit the course page](#) for more details.

The one day course can accommodate up to 20 delegates per day

EXCAVATION TRAINING AVAILABLE

Train your team with **Groundforce Training Services**

- Nationwide training locations
- EUSR accredited
- Flexible courses

0800 023 2663